

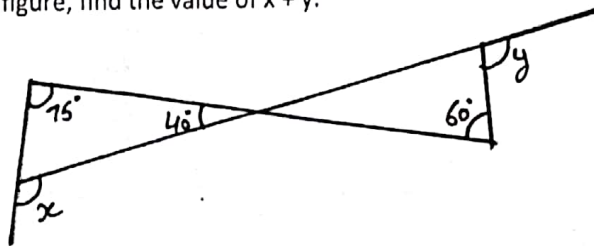
MATHS ASSIGNMENT

CLASS - VII

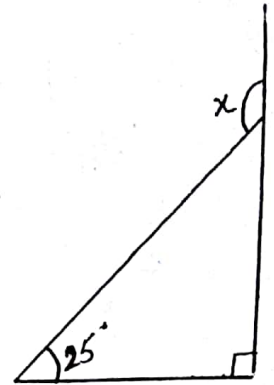
CH - 6 (The Triangle and Its Properties)

- One of the acute angles of a right triangle is 63° . Find the other acute angle.
- Find the lettered angles in fig.
- In the given figure, find the value of $x + y$.

Q3

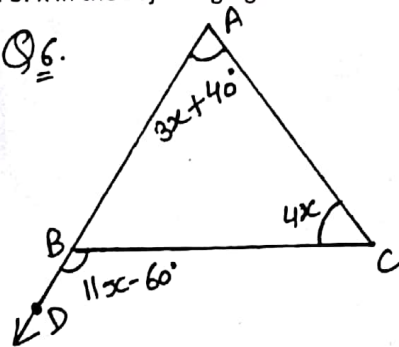


Q2

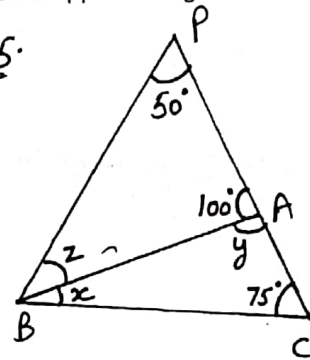


- One of the exterior angles of a triangle is 130° and the interior opposite angles are in the ratio $2 : 3$. Find the angles of the triangle.
- Find the value of x , y and z .
- Find the value of x in the adjoining figure.

Q6

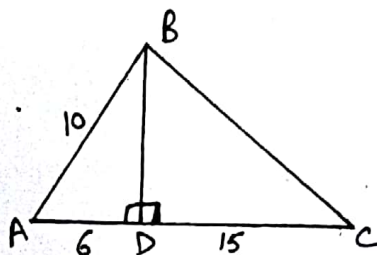


Q5

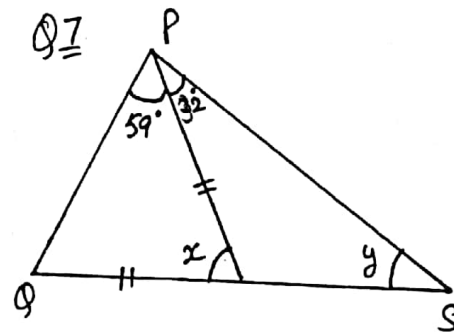


- Find x and y .
- Calculate (i) BD (ii) BC

Q8



Q7



- Determine if a triangle with sides 10cm , 22cm and 26cm is a right triangle.
- Find the perimeter of a rectangle whose one side measures 20m and the diagonal is 29m .
- Your garden is in shape of a rectangle that measures 24m by 32m . You want to put a diagonal walk from corner to corner across the garden. What will be the length of the walk?
- What is the measure of each angle of an equilateral triangle?